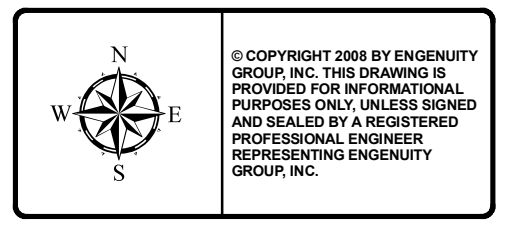


SHEET NO.	1
DATE	6/10/2008
DRAWN	Nestor Navaro
SCALE	1" = 1 Mile
PROJECT MANAGER	Lisa Tropepe
CHECKED	Lisa Tropepe



**Town of Ocean Ridge  
Zoning Map  
Palm Beach County, Florida**

PC - Preservation/Conservation	RMM - Medium Density Multiple Family Residential	Parcels
PO - Public Ownership	RSE - Single Family Residential	Subdivisions
RHM - High Density Multiple Family Residential	RSF - Single Family Residential State	Multiple Family Units
		Zone Limits
		Beach Cross Overs

**engenuity group inc.**  
A Higher Standard of Excellence  
Engineers • Surveyors • GIS Mappers  
1201 Belvedere Road, West Palm Beach, FL 33405  
PH (561) 855-1151 • FAX (561) 832-9395 • WWW.ENGENUITY.COM  
CERTIFICATE OF AUTHORIZATION # 7095

NO.	DATE	REVISIONS	BY